



2015 Drinking Water Report

Sunwood Lakes HOA, Inc. Water System
State ID #863043, Thurston County



Table of Contents

Your Water

Your Water System

2015 Test Results

Possible Contaminants

Key Definitions

Water Quality Table

About Lead

About Monitoring Waivers

More Information

Important Contact Information

About Your Water Quality

The Sunwood Lakes Homeowners Association (HOA) is committed to providing its residents with excellent water quality at all times and is proud of its past service record. The HOA partners with Washington Water Service Company and its courteous and knowledgeable water professionals to continually strive to improve upon the quality of water services we provide to you, our valued customer.

This 2015 Drinking Water Report is your annual update on the quality and safety of your drinking water. It includes the most recent water quality results through the monitoring period ending December 31, 2015, in accordance with state and federal regulations (not all testing is required every year). This report also provides access through references and telephone numbers to source water assessments, health effects information, and other water system topics. This allows you to make personal health-based decisions regarding your drinking water consumption and become more involved in decisions which may affect your health.

We hope you find this information helpful.

Your Water System

SOURCE WATER PROTECTION INFORMATION.

Drinking water comes from groundwater (wells and springs) and surface water (rivers, lakes, streams). Protecting these drinking water sources is key to sustaining safe drinking water supplies for this and future generations.

What you can do to protect source water:

- Ensure that your septic system is properly maintained.
- Use chemical fertilizers and pesticides sparingly, if at all.
- Don't dump any hazardous waste on the ground. This includes: motor oil, pesticides, paint or paint cans, mothballs, flea collars, household cleaners, medicines, etc.

Check the SWAP information for your water system:

The Washington State Department of Health Office of Drinking Water has compiled Source Water Assessment Program (SWAP) data for all community water systems in Washington.

A source water assessment includes:

- A delineation (definition) of the source water protection area,
- An inventory of potential sources of contamination, and
- A susceptibility determination (how susceptible the source is to contamination).

An interactive map with data for your water system is available at:

fortress.wa.gov/doh/eh/dw/swap/maps

WHERE DOES MY WATER COME FROM?

Your water comes from two 300-ft deep wells located within the development, on 80th Avenue SE. The Sunwood Lakes HOA owns the land around these wells and restricts any activity which could contaminate the groundwater.

These two wells (Wells #2 and Well #5) can pump direct from the well site to many of the homes, but also through the distribution mains to fill the two concrete storage tanks on Incline Drive SE. For homes in close proximity to the tanks, booster pumps re-pump the water from the tanks to those homes, providing increased service pressure.

The water is not treated (no chlorination, filtration, pH adjustment, etc.).



Possible Contaminants

Drinking water, including bottled water, may reasonably be expected to contain at least small amounts of some contaminants. The presence of contaminants does not necessarily indicate that the water poses a health risk.

More information about contaminants and potential health effects can be obtained by calling the EPA's Safe Drinking Water Hotline at (800) 426-4791.

Common sources of drinking water — both tap and bottled water — include rivers, lakes, streams, ponds, and reservoirs (surface water), and wells and springs (groundwater). As water travels over the surface of the land or through the ground, it dissolves naturally-occurring minerals and, in some cases, radioactive material. Water can also pick up substances resulting from the presence of animals or from human activity.

Contaminants that may be present in source water include:

- **Microbial contaminants**, such as viruses, parasites, and bacteria, which may come from sewage treatment plants, septic systems, agricultural livestock operations, and wildlife.
- **Inorganic contaminants**, such as salts and metals, which can be naturally-occurring or result from urban stormwater runoff, industrial or domestic wastewater discharges, oil and gas production, mining, or farming.
- **Pesticides and herbicides**, which may come from a variety of sources such as agriculture, urban stormwater runoff, and residential uses.
- **Radioactive contaminants**, which can be naturally-occurring or be the result of oil and gas production and mining activities.
- **Organic chemical contaminants**, including synthetic and volatile organic chemicals, which are byproducts of industrial processes and petroleum production, and can also come from gas stations, urban stormwater runoff, and septic systems.

In order to ensure that tap water is safe to drink, the Washington State Department of Health (DOH) and EPA prescribe regulations that limit the amount of certain contaminants in water provided by public water systems. The Food and Drug Administration (FDA) and Washington State Department of Agriculture regulations establish limits for contaminants in bottled water that must provide the same protection for public health.

VULNERABLE POPULATIONS

Some people may be more vulnerable to contaminants in drinking water than the general population. Immuno-compromised people such as those with cancer undergoing chemotherapy, those who have undergone organ transplants, people with HIV/AIDS or other immune system disorders, some elderly, and infants can be particularly at risk from infections. These people should seek advice about drinking water from their health care providers. EPA/CDC guidelines on appropriate means to lessen the risk of infection by *Cryptosporidium* and other microbial contaminants are available from the Safe Drinking Water Hotline at (800) 426-4791.

Key Definitions

Action Level (AL): The concentration of a contaminant which, when exceeded, triggers treatment or other requirements which a water system must follow.

Lead and Copper 90th Percentile Value: Out of every 10 homes sampled, 9 were at or below this level. This must be less than or equal to the AL or additional steps must be taken.

Maximum Contaminant Level (MCL): The highest level of a contaminant allowed in drinking water. MCLs are set as close to the MCLGs as feasible using the best available treatment technology.

Maximum Contaminant Level Goal (MCLG): The level of a contaminant in drinking water below which there is no known or expected risk to health. MCLGs allow for a margin of safety.

N/A: Not applicable

NTU: Nephelometric turbidity unit

ppb: Parts per billion ($\mu\text{g/L}$, micrograms per liter)

ppm: Parts per million (mg/L , milligrams per liter)

Secondary Maximum Contaminant Level (SMCL): These standards are developed as guidelines to protect the aesthetic qualities of drinking water and are not health based.

$\mu\text{mhos/cm}$: Measure of specific conductance.



2015 Water Quality Table

Your water is tested for more than 100 contaminants for which state and federal standards have been set.

Tables 1 & 2 list all primary contaminants that were detected above the state reporting level (SRL), along with their respective MCLs. The SRL is the minimum reporting level required by DOH (each analytical parameter has an SRL). Primary standards protect public health by limiting the levels of these contaminants in drinking water.

Table 3 lists secondary contaminants of interest to many consumers, as well as any unregulated contaminant detections. Secondary contaminants have no known health effects but can affect the aesthetic properties of water (taste, odor, and appearance). Unregulated contaminants are those for which EPA has not established drinking water standards. The purpose of unregulated contaminant monitoring is to help EPA determine their occurrence in drinking water and potential need for future regulation.

TABLE 1: PRIMARY CONTAMINANTS

Inorganic Chemicals	Year Tested	Units	MCL	MCLG	Your Water	Violation?	Major Sources in Drinking Water
Arsenic ¹	2010	ppb	10	0	3	No	Erosion of natural deposits (e.g., volcanic rock in Washington state); runoff from orchards; runoff from glass and electronics production wastes
Microbiological	Year Tested	MCL	MCLG	Highest Monthly Positives	Violation?	Major Sources in Drinking Water	
Total coliform bacteria ²	2015	1	0	5	Yes	Naturally present in the environment	

¹ Most recent testing done, in accordance with the regulations. Your drinking water source was granted a 9-year monitoring waiver for most inorganic chemicals (IOC) by the DOH, based on water quality history. With a waiver, one IOC sample (28 inorganic tests) is required every 9 years, rather than every 3 years. DOH uses the monitoring waivers allowed by EPA because they save systems money without compromising public health. The waivers are good for such a long time because inorganic chemicals in groundwater do not change over time, since the source is natural and consistent. **Nitrate is never waived (< 0.2 ppm in 2015).**

² For systems that collect <40 coliform samples per month, the MCL is one positive (unsatisfactory) monthly sample. Coliforms are bacteria that are naturally present in the environment, harmless to the general population, and used as an indicator that other potentially-harmful bacteria *may* be present. Their presence is a warning of potential problems because disease-causing organisms may also enter the system via the same route as the coliforms. The presence of coliforms usually means that soil or vegetation has entered the system. Details of the Feb 2015 Non-Acute Coliform MCL Violation and what was done to correct it were provided in a mailed notice to customers dated Mar 9, 2015. Temporary continuous chlorination was placed in service Feb 9–May 26 as a catwalk was constructed between the two storage tanks so that the tanks could safely be pressure tested for leaks and re-sealed/repared. All of this work was completed, and all follow up and routine monthly coliform samples have been absent of any bacteria since then.

2015 Water Quality Table

(Continued)

TABLE 2: LEAD AND COPPER

Samples are collected at customer faucets. The number of homes sampled is based on population served by the system. Specific EPA mandated criteria are used to select the homes.

Primary Contaminants	Year Tested	Units	AL	90 th Percentile	Samples > AL	Violation?	Major Sources in Drinking Water
Copper	2015	ppm	1.3	0.02	0 of 10	No	Corrosion of household plumbing systems; erosion of natural deposits
Lead	2015	ppb	15	2	0 of 10	No	Corrosion of household plumbing systems; erosion of natural deposits

TABLE 3: SECONDARY CONTAMINANTS

Secondary Contaminants	Year Tested ¹	Units	SMCL	Your Water	Violation?	Major Sources in Drinking Water
Iron	2010	ppm	0.30	< 0.1	No	Leaching from natural deposits; industrial wastes
Manganese ²	2015	ppm	0.05	0.13	No	Leaching from natural deposits
Chloride	2010	ppm	250	5	No	Runoff/leaching from natural deposits; seawater influence
Sodium ³	2010	ppm	n/a	7	No	Erosion of natural deposits; seawater influence

¹ Most recent testing done, in accordance with the regulations. Your drinking water source was granted a 9-year monitoring waiver for most inorganic chemicals (IOC) by the DOH, based on water quality history. With a waiver, one IOC sample (28 inorganic tests) is required every 9 years, rather than every 3 years. DOH uses the monitoring waivers allowed by EPA because they save systems money without compromising public health. The waivers are good for such a long time because inorganic chemicals in groundwater do not change over time, since the source is natural and consistent. Manganese was required to be tested again in 2015, as a condition of the monitoring waiver.

² SMCLs are guidelines only, set to control the adverse aesthetic effects that nuisance minerals like manganese can cause (staining of sinks and fixtures, and dirty colored water).

³ The EPA recommends 20 ppm sodium as a level of concern for consumers who must restrict their dietary intake.

2015 Water Quality Table

(Continued)

Secondary Contaminants	Year Tested	Units	SMCL	Your Water	Violation?	Major Sources in Drinking Water
Hardness ⁴	2010	ppm	n/a	58	No	Erosion of natural deposits
Conductivity	2010	µmhos/cm	700	140	No	Substances that form natural deposits; seawater influence
Turbidity ⁵	2010	NTU	n/a	0.1	No	Soil runoff
Color	2010	color units	15	< 5	No	Naturally occurring organic materials

⁴When reading the hardness value, 0–75 ppm is considered “soft” water, 75–150 ppm is “moderately hard,” 150–300 ppm is “hard,” and > 300 ppm is “very hard”. To convert to grains per gallon of hardness, divide total hardness by 17.1.

⁵The state’s drinking water response level is 1.0 NTU, meaning additional sampling or steps *may* be required, if exceeded.

About Lead

In Washington state, lead in drinking water comes primarily from materials and components used in household plumbing. If present, elevated levels of lead can cause serious health problems, especially in pregnant women and young children.

When a drinking water tap has not been used for six hours or more, you can minimize the potential for lead exposure by flushing the tap until the water is noticeably colder (30 seconds to two minutes) before using the water for drinking or cooking. Hot water is likely to contain higher levels of lead. Only use water from the cold-water tap for drinking, cooking, and especially for making baby formula.

If you are concerned about lead in your water, you may wish to have your home's water tested.

Information on lead in drinking water is available from EPA's Safe Drinking Water Hotline at (800) 426-4791, or online at www.epa.gov/your-drinking-water.



About Monitoring Waivers

(Reduced Monitoring)

ORGANIC CHEMICALS

Drinking water sources are sampled and tested a minimum of every six to nine years for an array of organic chemicals including volatile organic chemicals (VOCs) and synthetic organic chemicals (SOCs), such as herbicides and pesticides. VOCs are byproducts of industrial processes and petroleum production and can also come from gas stations, urban stormwater runoff, and septic systems.

Sampling frequencies for these groups of organic chemicals can vary depending on the county in which your water system is located, whether the source has been granted a monitoring waiver, and whether there have been past detections of any of these organic contaminants.

Monitoring waivers are granted by the DOH and are based on a source's susceptibility rating (risk of contamination), water quality history, and information gathered from across the state.

If there were detections of organic contaminants obtained during the most recent round of compliance monitoring (2009–2015 for VOCs; 2006–2015 for SOCs), they are shown in the water quality data tables. If there are none reported in the tables, there were none detected.

RADIOACTIVE CONTAMINANTS

Drinking water sources are sampled and tested a minimum of every six years for radioactive contaminants (radium 228 and gross alpha). These contaminants can be naturally occurring or the result of oil and gas production and mining activities.

If there were any detections obtained during the most recent round of compliance monitoring (2009–2015), they are shown in the water quality data tables. If there are none reported in the tables, there were none detected.

Important Contact Information

Washington Water Service Company

P.O. Box 336
Gig Harbor, WA 98335-0336

Office: (253) 851-4060
Toll Free: (877) 408-4060

www.wawater.com

Paul Robischon
SW Regional Operations Manager

Sunwood Lakes Homeowners Association

8005-1 Thrulake Circle SE
Olympia, WA 98513

Office: (360) 491-9250
Fax: (360) 491-0415

Washington State Department of Health Southwest Drinking Water Operations

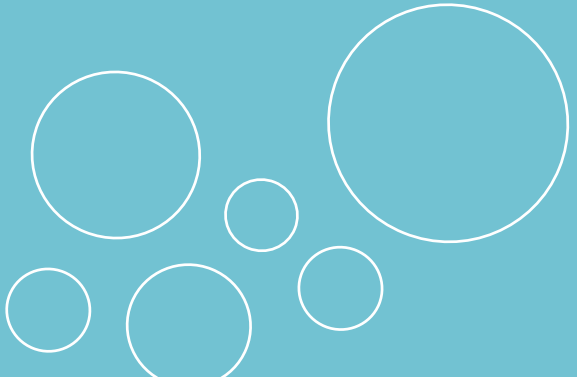
P.O. Box 47823
Olympia, WA 98504-7823

(360) 236-3030

www.doh.wa.gov/ehp/dw

Thank you.

Thanks for taking the time to learn more about your water quality!



OUR WATER QUALITY COMMITMENT:

As Our Contracted Partners, You Can Count on Washington Water Employees to...

- Provide you with the highest quality water possible
- Sample, test, and treat your water on a regular basis
- Work diligently to meet every water quality standard on every system, every day
- Maintain the water distribution system reliability
- Provide you with the highest level of customer service possible